

# Canon Digital Cinema Camera Firmware Update Procedure

## *EOS C100*



Firmware is software installed to control the equipment. Using the firmware, the camera can perform many operations, such as shooting or processing the image. The following is an explanation of how to update your camera to the new firmware.

Please note that, the following items are required to perform this update, so please have them ready in advance.

- 1) Computer.
- 2) Commercially available SD memory card (64 MB or more) or SDHC/SDXC memory card.
- 3) Commercially available SD card reader or an SD card slot built into the computer.

Customers who do not have the above items are advised to contact our customer support center.

Make sure you have read the precautions and procedures below carefully before updating the firmware.

### **IMPORTANT: Observe the following precautions when updating the firmware**

- When updating the firmware, make sure to use a battery pack and power the camera using the supplied compact power adapter.
- Before updating the firmware, initialize the SD card in the camera. When you initialize the SD card, any data written on it will be erased, so please be sure to save a copy of any important data on your computer or somewhere other than the card, prior to initializing it.
- While updating the firmware, make absolutely sure not to turn the camera off or to operate its buttons or controls. Doing so could cause camera malfunctions.
- After the firmware update is completed, all of the camera settings are reset to their default values.
- After the firmware update is completed, it is not possible to revert back to a previous version.
- If the firmware update does not finish normally, or if the camera no longer starts normally, please contact our camera repair center.

## Step 1: Make Preparations

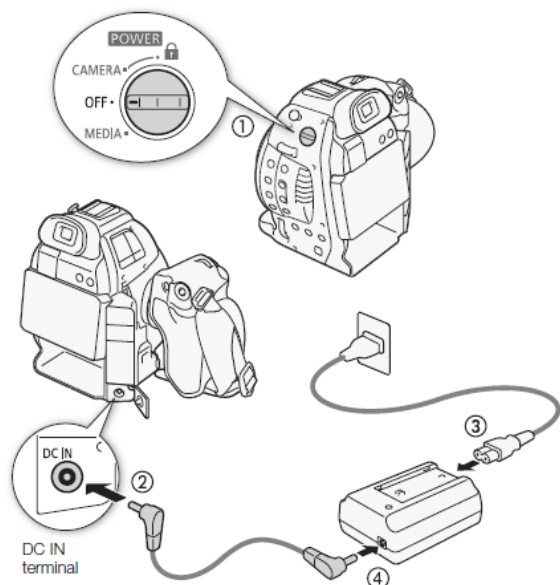
The following items are required for this firmware update.

1.	camera	EOS C100
2.	Computer	OS: Computer running either Windows or Mac OS X <sup>(*)</sup>
3.	Memory Card	A 64 MB or higher-capacity SD memory card or an SDHC/SDXC memory card (both commercially available)
4.	Memory card reader	An SD card reader/writer (commercially available) or an SD card slot built into the computer
5.	Battery Pack	The battery pack (BP-955) that comes with the camera.
6.	Compact Power Adapter	The compact power adapter (CA-930) and DC cable (DC-930) that come with the camera.

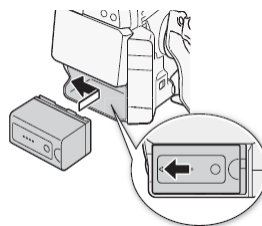
<sup>(\*)</sup> OS Requirements: Windows 8.1, Windows 8, Windows 7 SP1 or Mac OS X (10.7-10.9)


## Step 2: Check the firmware version on your camera

1. Connect the compact power adapter and DC cable to the camera, and insert the battery pack into the camera.



- (1) Hold down the button on the POWER switch and move it to OFF.
- (2) Connect the DC cable to the DC IN terminal on the camera.
- (3) Connect the power cord to the compact power adapter and plug it into a power outlet.
- (4) Connect the DC cable to the compact power adapter.
- (5) Insert the battery pack.



2. Slide the POWER switch to CAMERA.
3. Press the MENU, and open the [Firmware] submenu.  
[  Other Functions ] -> [Firmware]

Firmware Version 1.0.4.1.00 is for cameras with Firmware up to Version 1.0.3.1.00. If the camera's firmware is already Version 1.0.4.1.00, it is not necessary to update the firmware.



4. Press the MENU, and slide the POWER switch to OFF.


### Step 3: Prepare an SD card for the firmware update

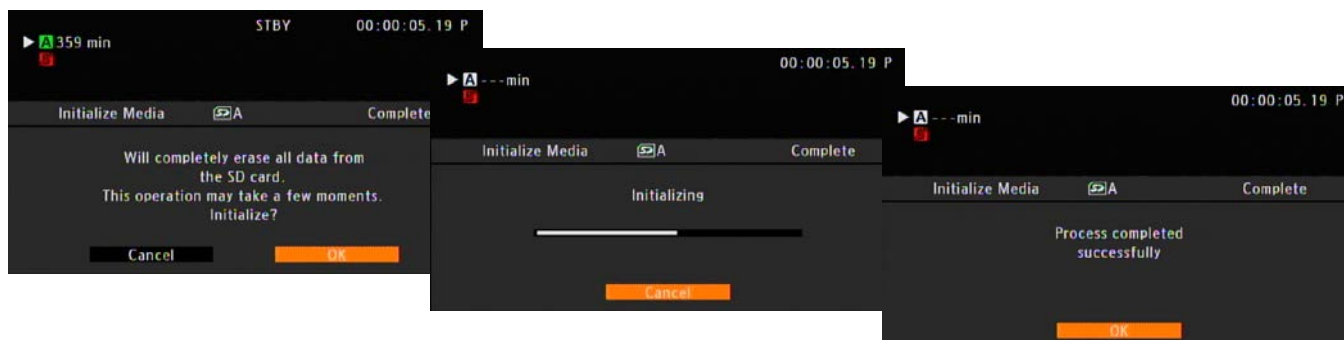
First, insert an SD card into the camera and initialize it. This section will explain how to use your computer and an SD card reader/writer (or an SD card slot built into your computer) to copy the new firmware to the initialized SD card.

#### Caution

**When you initialize the SD card, all of the data saved on it will be erased, so make sure to save any important data on your computer or somewhere else before initializing the card. If you perform the firmware update with data remaining on the SD card, it could cause the camera to malfunction.**

#### Insert an SD card into the camera and initialize it.

1. Insert the SD card into memory card slot A on the camera.
2. Slide the power switch to CAMERA.
3. Press the MENU, and open the [Initialize Media] submenu.  
[  Other Functions ] -> [Initialize Media]
4. Select [SD Card A] and then press the joystick.
5. Select [Complete] and then press the joystick.
6. Select the [OK] and then press the joystick. The initialization will start, and after a short while, the process will be completed and a confirmation screen will appear. Press the joystick.



7. Press the MENU, and slide the power switch to OFF, and then remove the SD card from the camera.

**Next you will use a computer to copy the firmware to the SD card that was completely initialized in the camera. Make sure to perform the procedure that corresponds to your computer's operating system (Windows or Mac OS).**

#### For Windows

1. Insert the completely initialized SD card into the SD card reader/writer (or the SD card slot on the computer).
2. If you click on the **Computer** icon, a removable disk icon labeled **CANON** appears.
3. Drag the firmware update data **VIF4.FIM** from the **c100-v1041-win** folder created previously to the **CANON** icon.

#### Caution

**Please be sure to copy the firmware to the root directory of the SD card.**

4. After copying the data, double-click the **CANON** icon. If you see the file **VIF4.FIM**, the copying process is completed.

## For Mac OS

1. Insert the completely initialized SD card into the SD card reader/writer (or the SD card slot on the computer), and an icon labeled **CANON** will appear on the computer's desktop.
2. Drag the firmware update data **VIF4.FIM** from the **c100-v1041-mac** icon created previously to the **CANON** icon on the desktop.

### Caution

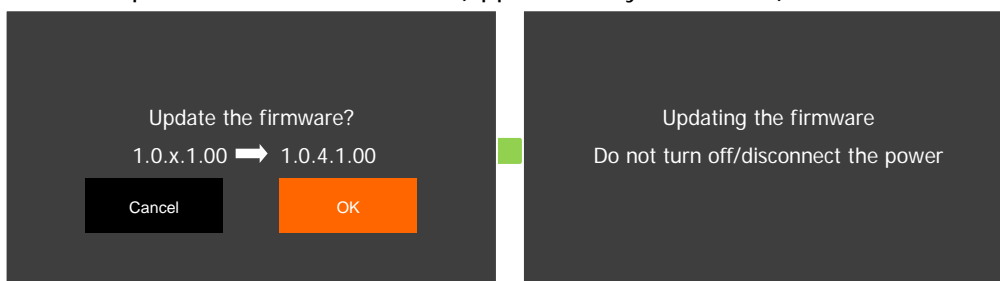
**Make sure to copy the firmware to the root directory of the SD card.**

3. After copying the data, double-click the **CANON** icon. If you see the file **VIF4.FIM**, the copying process is completed.

## Step 4: Update the camera to the new firmware

This section explains how to operate the camera.

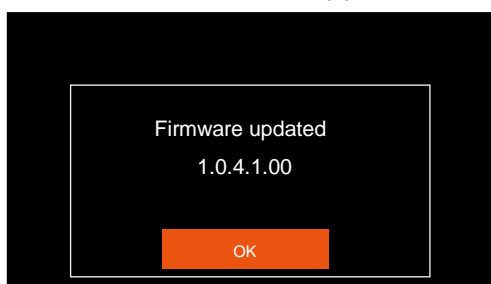
1. Connect the compact power adapter and DC cable to the camera, and insert the battery pack into the camera. (Refer to the Step2-1)
2. Insert the SD card that contains the firmware update data into the SD card slot of the camera.
3. Slide the POWER switch to CAMERA.
4. Press the MENU, and in the submenu of [Other Functions], select [Firmware], and then press the joystick.
5. When the firmware update confirmation screen appears, select [OK] and then press the joystick to start the firmware update. After a short while (approximately 5 minutes.), the firmware will be updated.



### Caution

**The firmware update takes approximately 5 minutes to complete. During this time, please do not turn off the camera or operate any of its controls. Doing so could cause camera malfunctions.**

6. After the update ends, the camera will automatically restart, and a screen that shows the new firmware version will appear. Press the joystick.



7. All of the settings will be reset, and the [Date/time] screen will appear. Set the date and time.

8. Turn off the camera, and then remove the SD card.
9. Perform the steps in **“Step 2: Check the firmware version on your camera”**, to confirm that the firmware version has changed.

**The firmware update is complete.**

**Caution**

After the firmware update is completed, make sure to follow steps 1 to 7 of **“Step 3: Prepare an SD card for the firmware update”** completely initialize the SD card that was used to copy the firmware before using the memory card. Also, make sure to delete from your computer the firmware you downloaded from your computer.